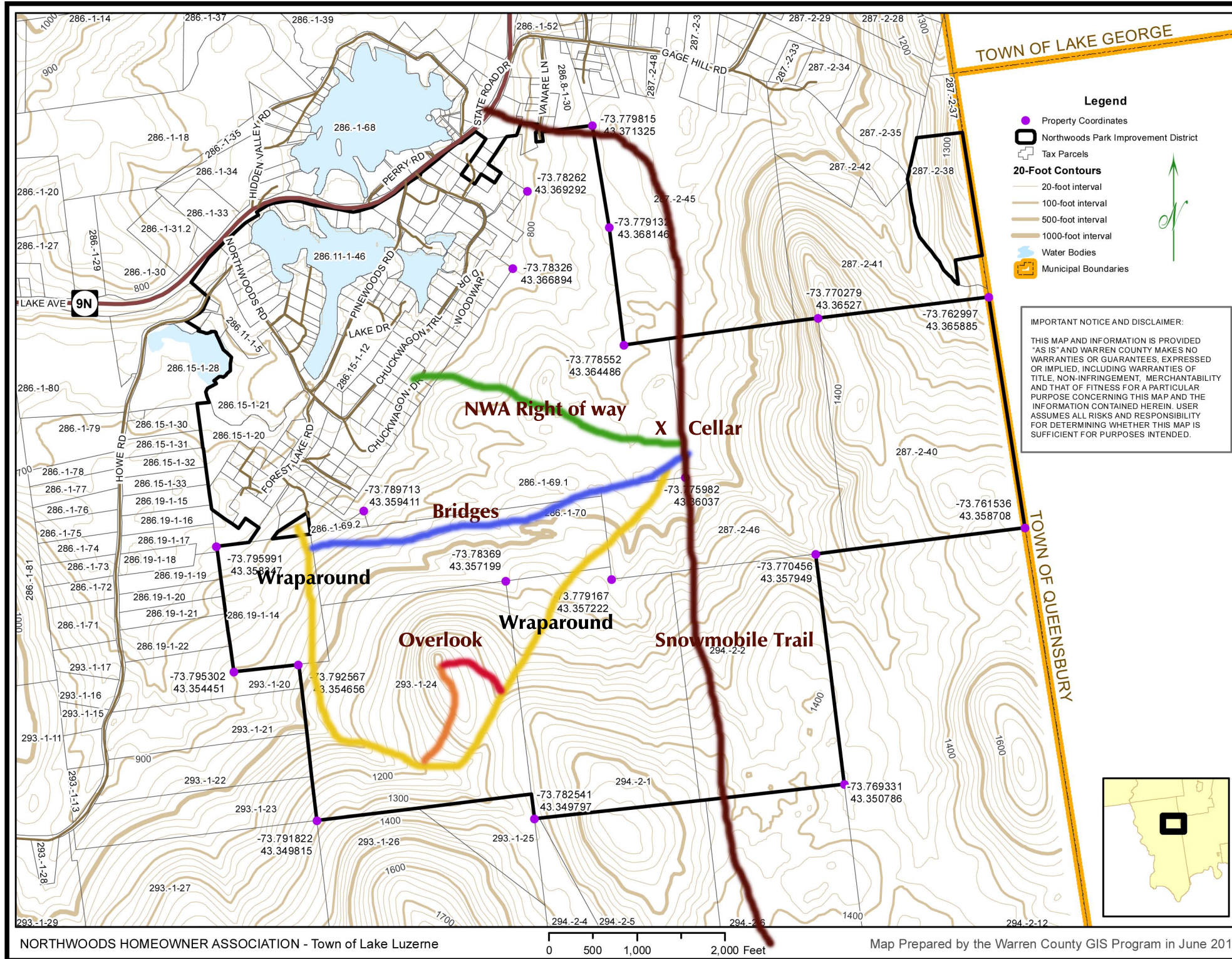


Northwoods Association Trail Map

Northwoods trails are private property solely for the use of Northwoods residents and their guests.



Legend

- Property Coordinates
- Northwoods Park Improvement District
- Tax Parcels
- 20-Foot Contours**
 - 20-foot interval
 - 100-foot interval
 - 500-foot interval
 - 1000-foot interval
- Water Bodies
- Municipal Boundaries

IMPORTANT NOTICE AND DISCLAIMER:
 THIS MAP AND INFORMATION IS PROVIDED "AS IS" AND WARREN COUNTY MAKES NO WARRANTIES OR GUARANTEES, EXPRESSED OR IMPLIED, INCLUDING WARRANTIES OF TITLE, NON-INFRINGEMENT, MERCHANTABILITY AND THAT OF FITNESS FOR A PARTICULAR PURPOSE CONCERNING THIS MAP AND THE INFORMATION CONTAINED HEREIN. USER ASSUMES ALL RISKS AND RESPONSIBILITY FOR DETERMINING WHETHER THIS MAP IS SUFFICIENT FOR PURPOSES INTENDED.

Key

- Wraparound**
- Bridges Trail (snowmobiles to SWC trail system)**
- Summit Trail - to overlook**
- Summit Trail – easier way to overlook**
- NWA Right of Way (stay on trail)**
- SWC snowmobile trail (groomed)**

The Wraparound Trail starts at the top of Commons Lane.

Conditions on trails are changeable.

Look out for downed trees and other obstructions when riding.

Though some trails are easier than others, none can be considered a "walk in the park".

Please sign in and out at the trail junction of The Wraparound and Bridges Trail.